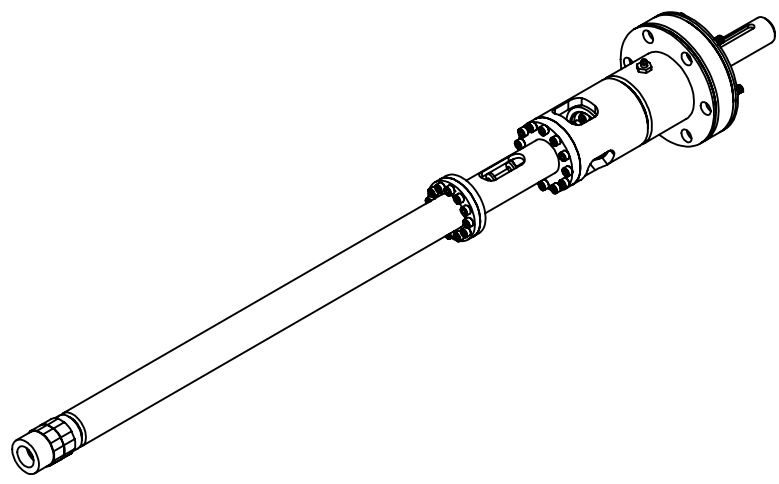
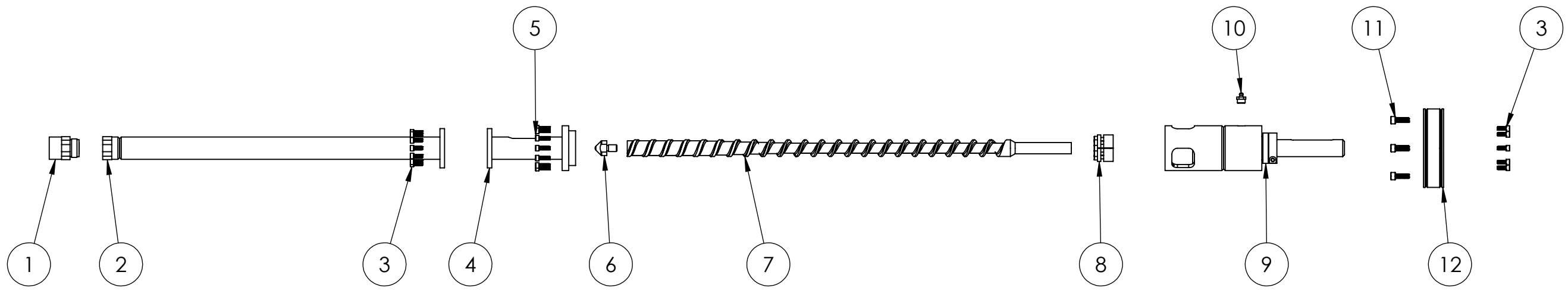


8 7 6 5 4 3 2 1

F  
E  
D  
C  
B  
A

F  
E  
D  
C  
B  
A



12	1	Gearbox flange	EXTPRO-V1 1110.00	Mild Steel
11	6	M8 X 25 mm socket head screw DIN 912	EXTPRO-V1 09	Black oxyde steel
10	1	Greasing nozzle	EXTPRO-V1 06	Steel
9	1	Bearing Body & Shaft	EXTPRO-V1 1120.00	-
8	1	Clip bushing	EXTPRO-V1 05	Steel
7	1	Screw	EXTPRO-V1 1100.02	1.8509 (38CrMoA1A)
6	1	Screw tip	EXTPRO-V1 1100.03	1.7225 (42CrMo4)
5	12	M6 X 20 mm socket head screw DIN 912	EXTPRO-V1 07	Black oxyde steel
4	1	Barrel inlet	EXTPRO-V1 1130.00	-
3	20	M6 x 16 mm socket head screw DIN 912	EXTPRO-V1 08	Black oxyde steel
2	1	Barrel assembly	EXTPRO-V1 1140.00	-
1	1	Intermediate nozzle	EXTPRO-V1 1100.01	1.0037 (S235JR)
ITEM NO.	QTY.	DESCRIPTION	PART NUMBER	Material

	Machine <b>Extruder PRO</b>		Description <b>Screw Assembly</b>		
	Projection method: <b>First angle</b>		Release date 07/01/20	Drawing no. EXTPRO-V1 1100.00	Rev. A
	General tolerances <b>ISO 2768-m</b>	Doc. type <b>Assembly</b>	Units unless specified <b>mm</b>	Sheet size <b>A3</b>	Scale <b>1:5</b>

8 7 6 5 4 3 2 1