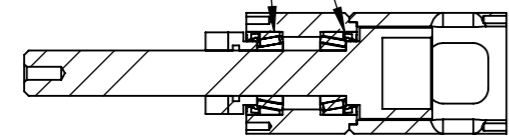


8 7 6 5 4 3 2 1

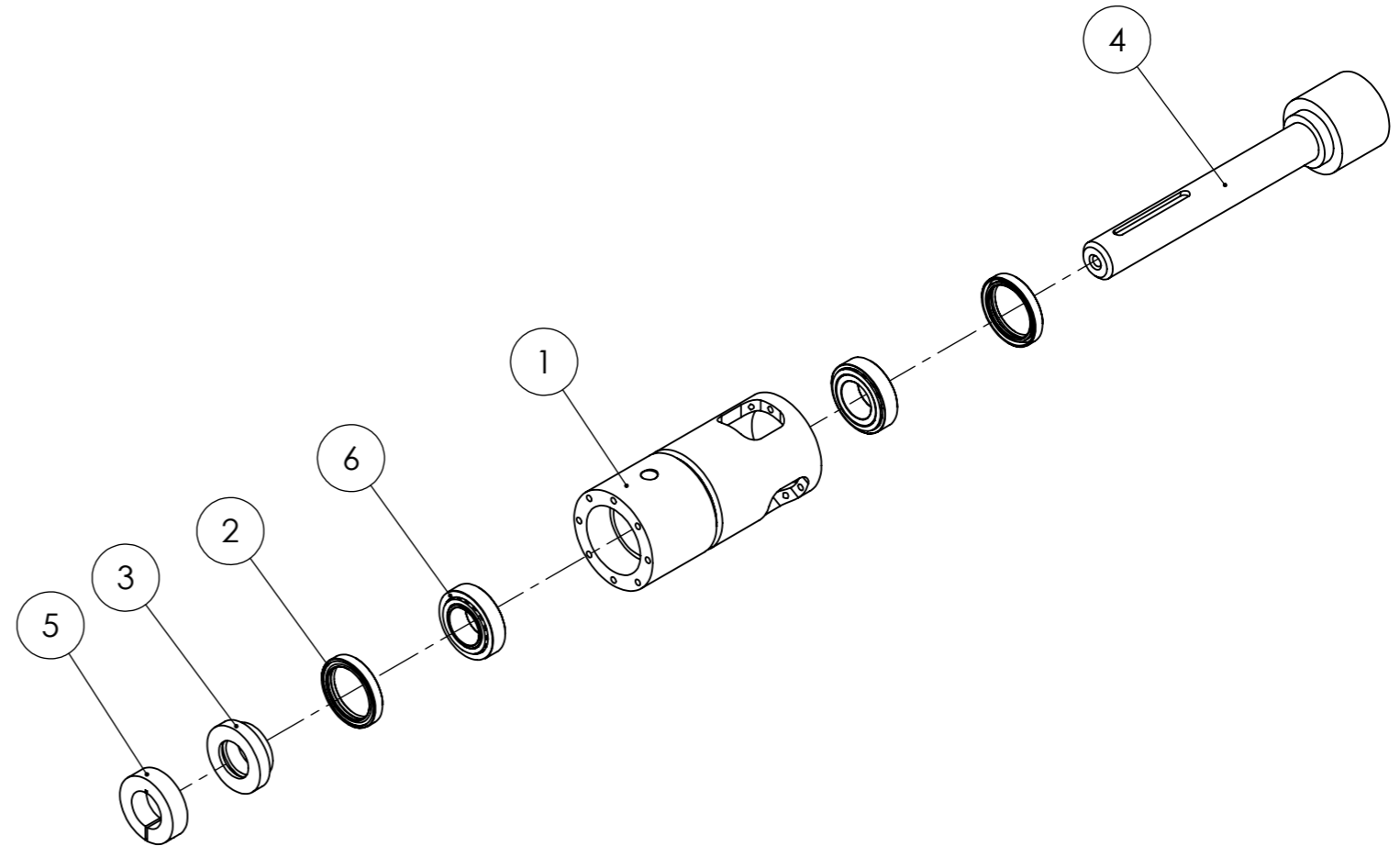
F  
E  
D  
C  
B  
A

F  
E  
D  
C  
B  
A

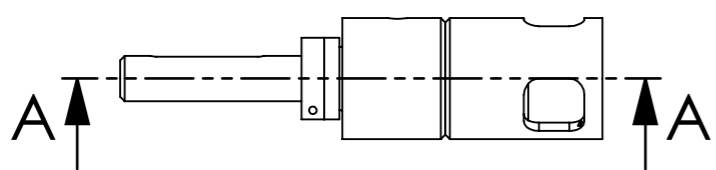
PAY ATTENTION TO THE TAPER BEARINGS ORIENTATION



SECTION A-A



LUBRIFY THE BEARINGS WITH BALL BEARING GREASE BEFORE ASSEMBLY. GREASE EVERY MONTH.



6	2	Tapered bearing 32006X	EXTPRO-V1 04	-
5	1	Shaft Clamp	EXTPRO-V1 03	Steel
4	1	Coupling Shaft	EXTPRO-V1 1120.02	C45
3	1	Seal bearing spacer	EXTPRO-V1 1120.01	Mild Steel
2	2	Bearing seal - DIN3760 AS 42x55x8	EXTPRO-V1 02	Rubber
1	1	Bearing body	EXTPRO-V1 1121.00	-
ITEM NO.	QTY.	DESCRIPTION	PART NO.	MATERIAL



Machine <b>Extruder PRO</b>		Description <b>Bearing Body Assembly</b>		
Projection method: <b>First angle</b>		Release date 07/01/20	Drawing no. EXTPRO-V1 1121.00	Rev. A
General tolerances <b>ISO 2768-m</b>	Doc. type <b>Assembly</b>	Units unless specified <b>mm</b>	Sheet size <b>A3</b>	Scale <b>1:2</b>
			Sheet <b>1 / 1</b>	

8 7 6 5 4 3 2 1