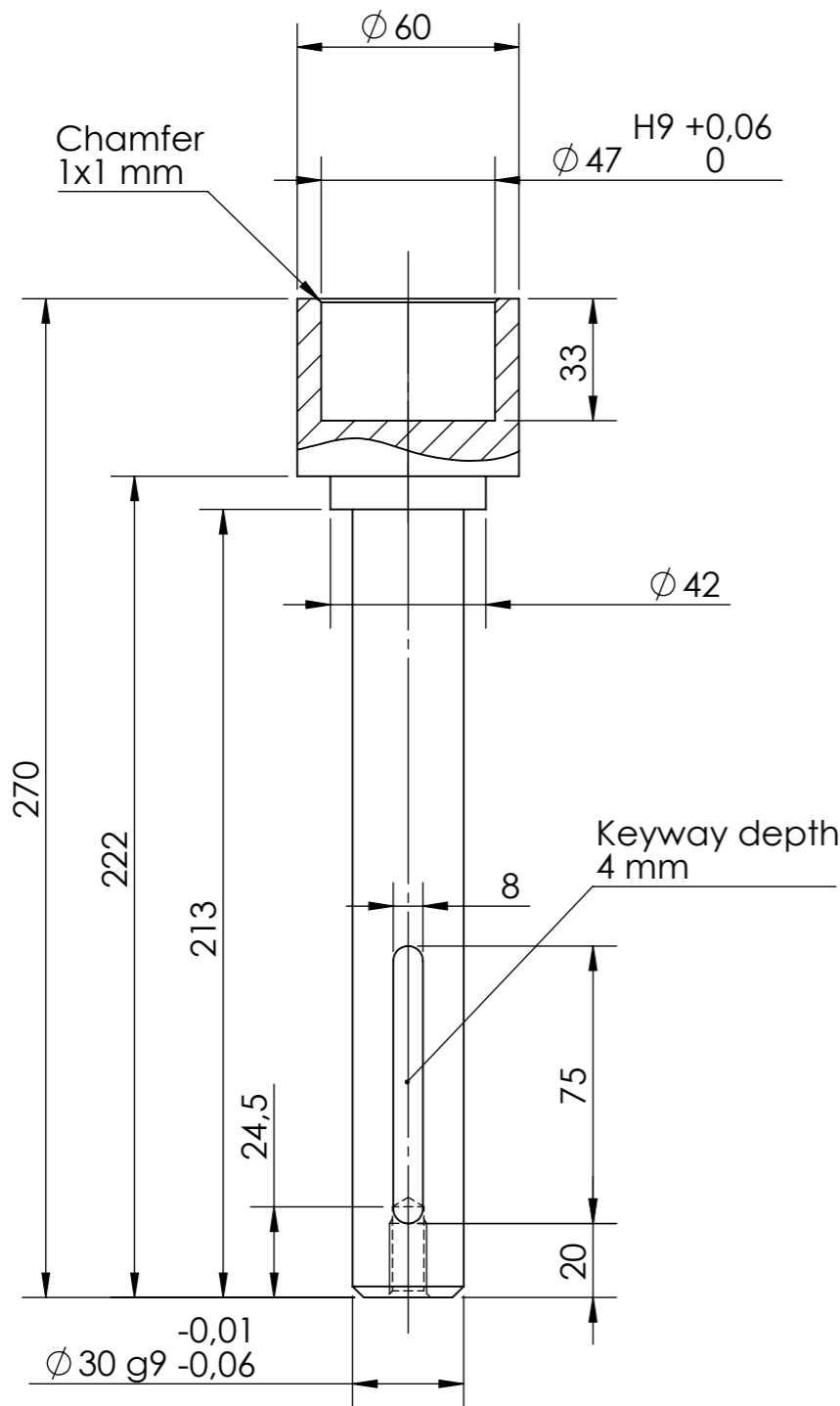
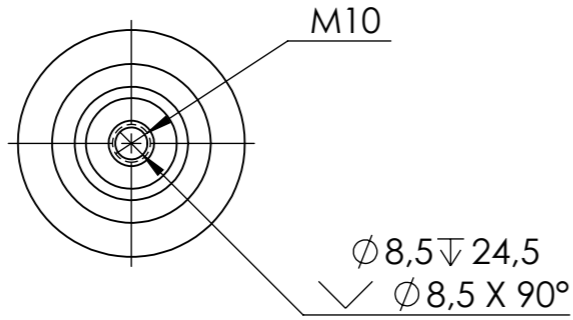
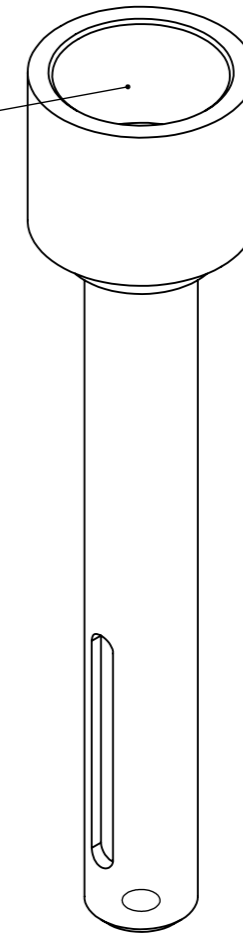
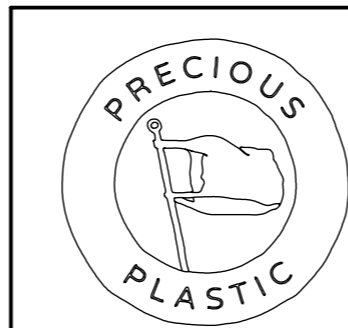
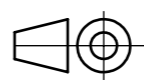


Cavity for cylindrical clamp bushing. Surface is preferred to be rough (Ra 1.6 μm)



NOTE: Shaft length & diameter may vary, depending on choice of motor and transmission.



Weight		Material			
1.8 kg		C45			
Machine		Description			
Extruder PRO		Coupling Shaft			
Projection method:		Release date	Drawing no.		Rev.
First angle 		07/01/20	EXTPRO-V1 1120.02		A
General tolerances		Doc. type	Units unless specified	Sheet size	Scale
ISO 2768-m		Part	mm	A3	1:10
					Sheet
					1 / 1

F
E
D
C
B
A

F
E
D
C
B
A

8
7
6
5
4
3
2
1

8
7
6
5
4
3
2
1

8
7
6
5
4
3
2
1

8
7
6
5
4
3
2
1

8
7
6
5
4
3
2
1

8
7
6
5
4
3
2
1

8
7
6
5
4
3
2
1

8
7
6
5
4
3
2
1