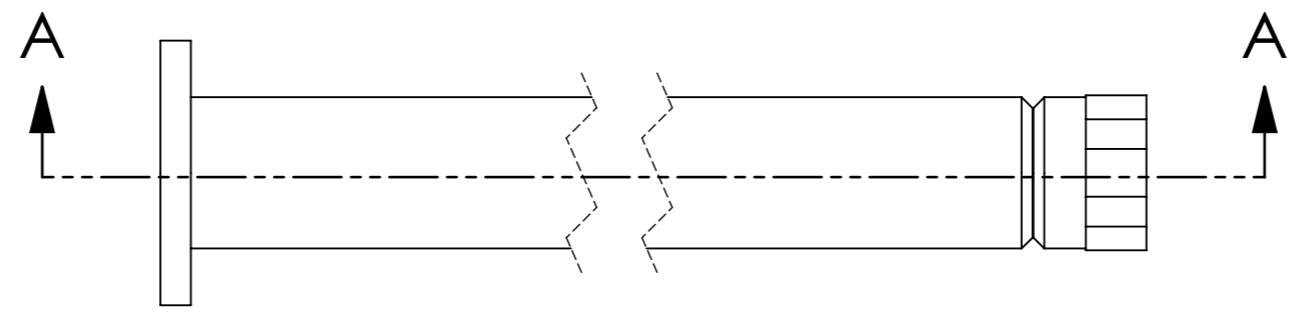


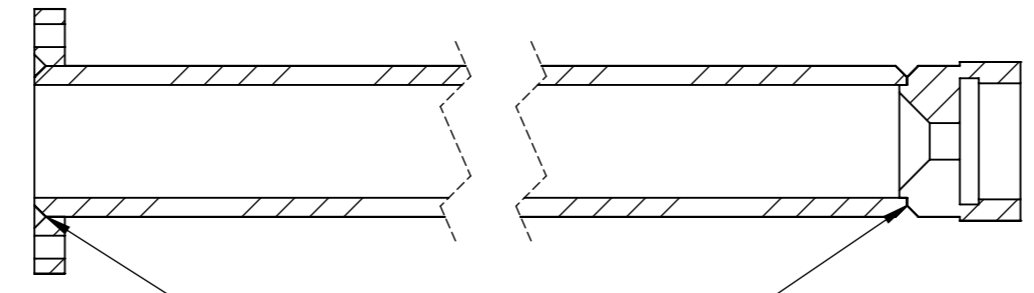
8 7 6 5 4 3 2 1

F  
E  
D  
C  
B  
A

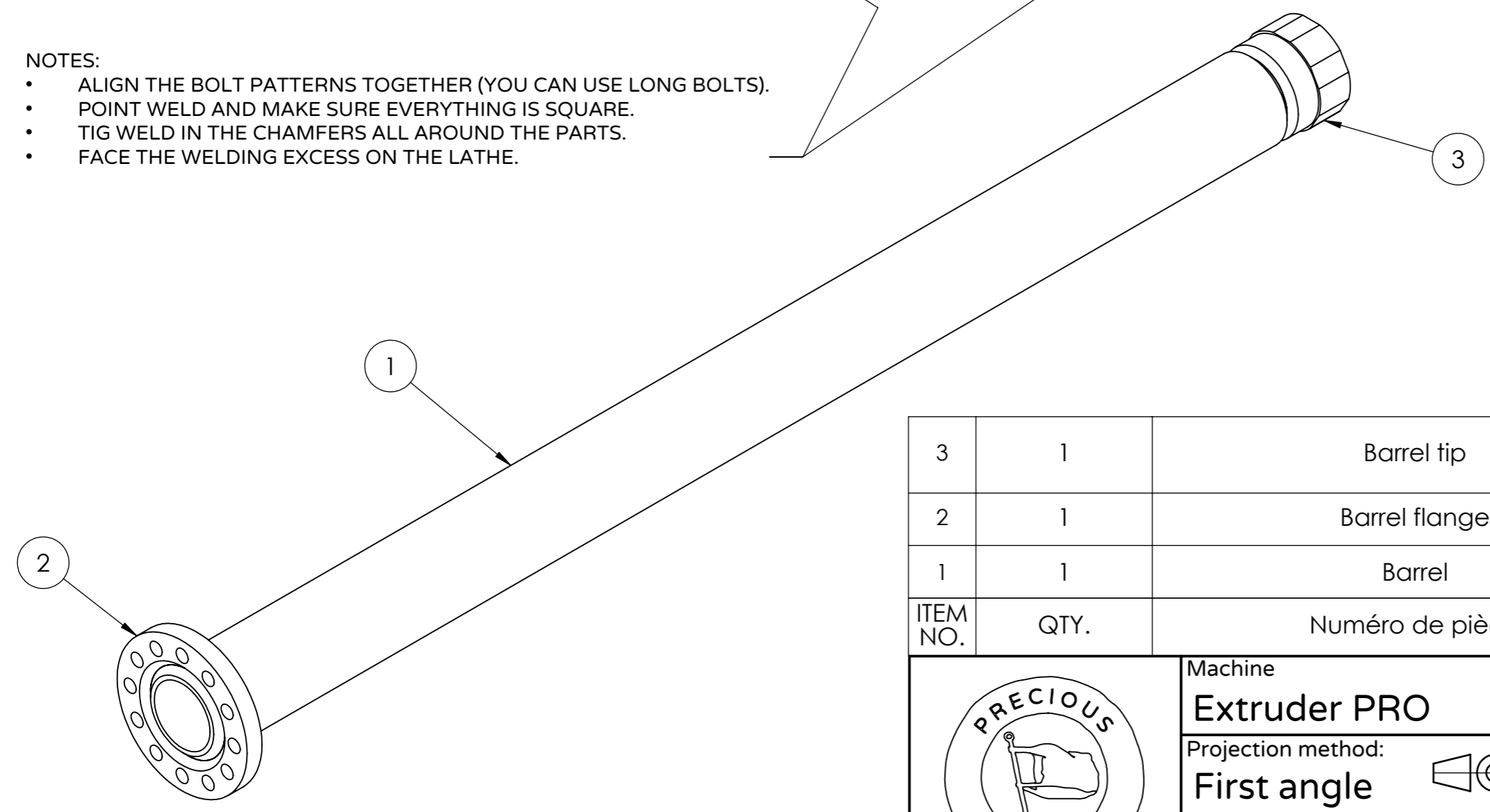
F  
E  
D  
C  
B  
A



SECTION A-A



- NOTES:
- ALIGN THE BOLT PATTERNS TOGETHER (YOU CAN USE LONG BOLTS).
  - POINT WELD AND MAKE SURE EVERYTHING IS SQUARE.
  - TIG WELD IN THE CHAMFERS ALL AROUND THE PARTS.
  - FACE THE WELDING EXCESS ON THE LATHE.



3	1	Barrel tip	EXTPRO-V1 1140.03	Mild Steel
2	1	Barrel flange	EXTPRO-V1 1140.02	Mild Steel
1	1	Barrel	EXTPRO-V1 1140.01	Mild Steel
ITEM NO.	QTY.	Numéro de pièce	PART NO.	MATERIAL

	Machine <b>Extruder PRO</b>		Description <b>Barrel</b>		
	Projection method: <b>First angle</b>		Release date <b>07/01/20</b>	Drawing no. <b>EXTPRO-V1 1140.00</b>	Rev. <b>A</b>
	General tolerances <b>ISO 2768-m</b>	Doc. type <b>Assembly</b>	Units unless specified <b>mm</b>	Sheet size <b>A3</b>	Scale <b>1:2</b>

8 7 6 5 4 3 2 1